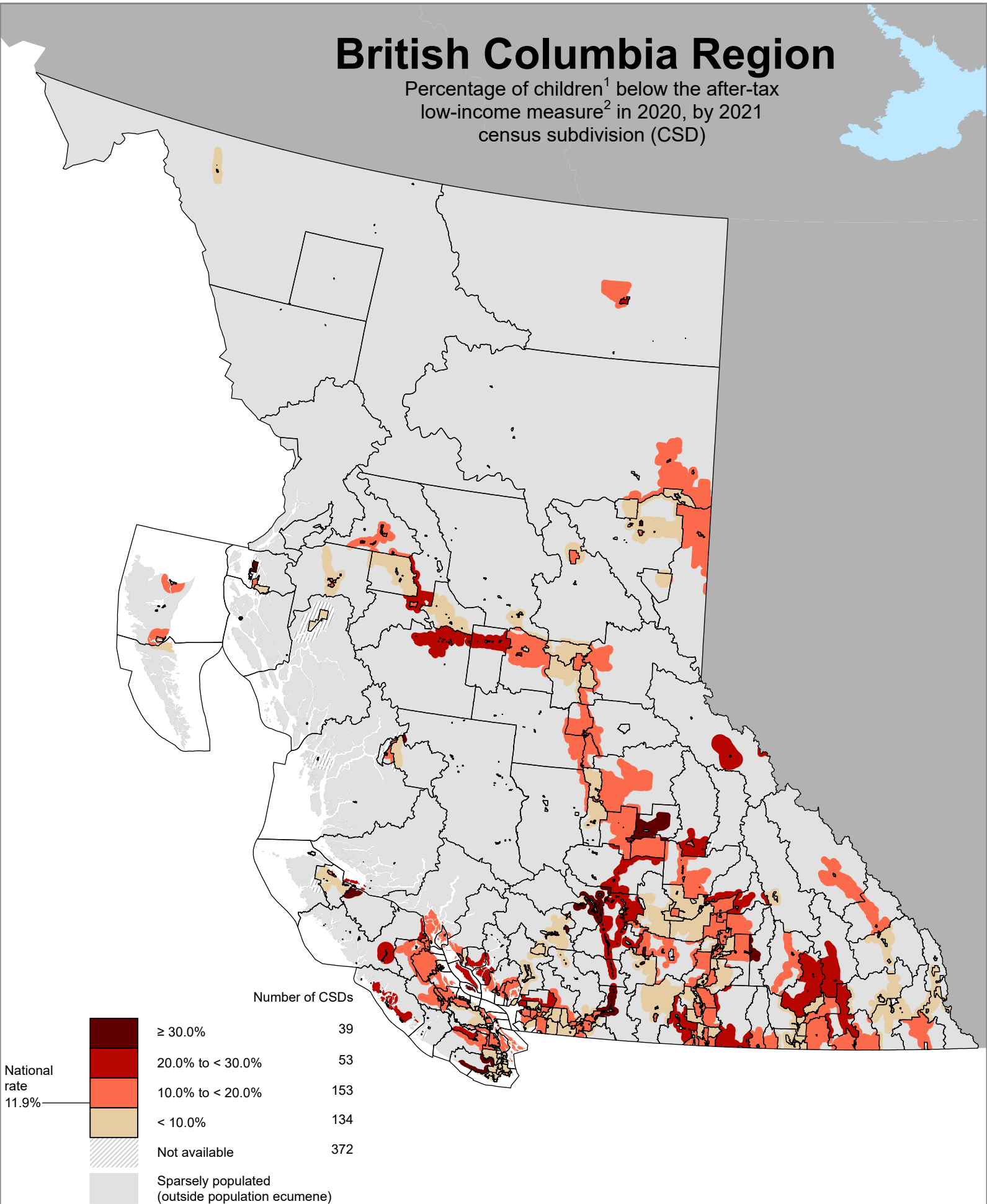


British Columbia Region

Percentage of children¹ below the after-tax low-income measure² in 2020, by 2021 census subdivision (CSD)



National rate
11.9%

1. Children are defined here as the population in private households younger than 18 years of age.
2. For a one-person household, the after-tax low-income measure (LIM-AT) is \$26,503. For larger households, this amount is adjusted upward by multiplying it by the square root of household size.

