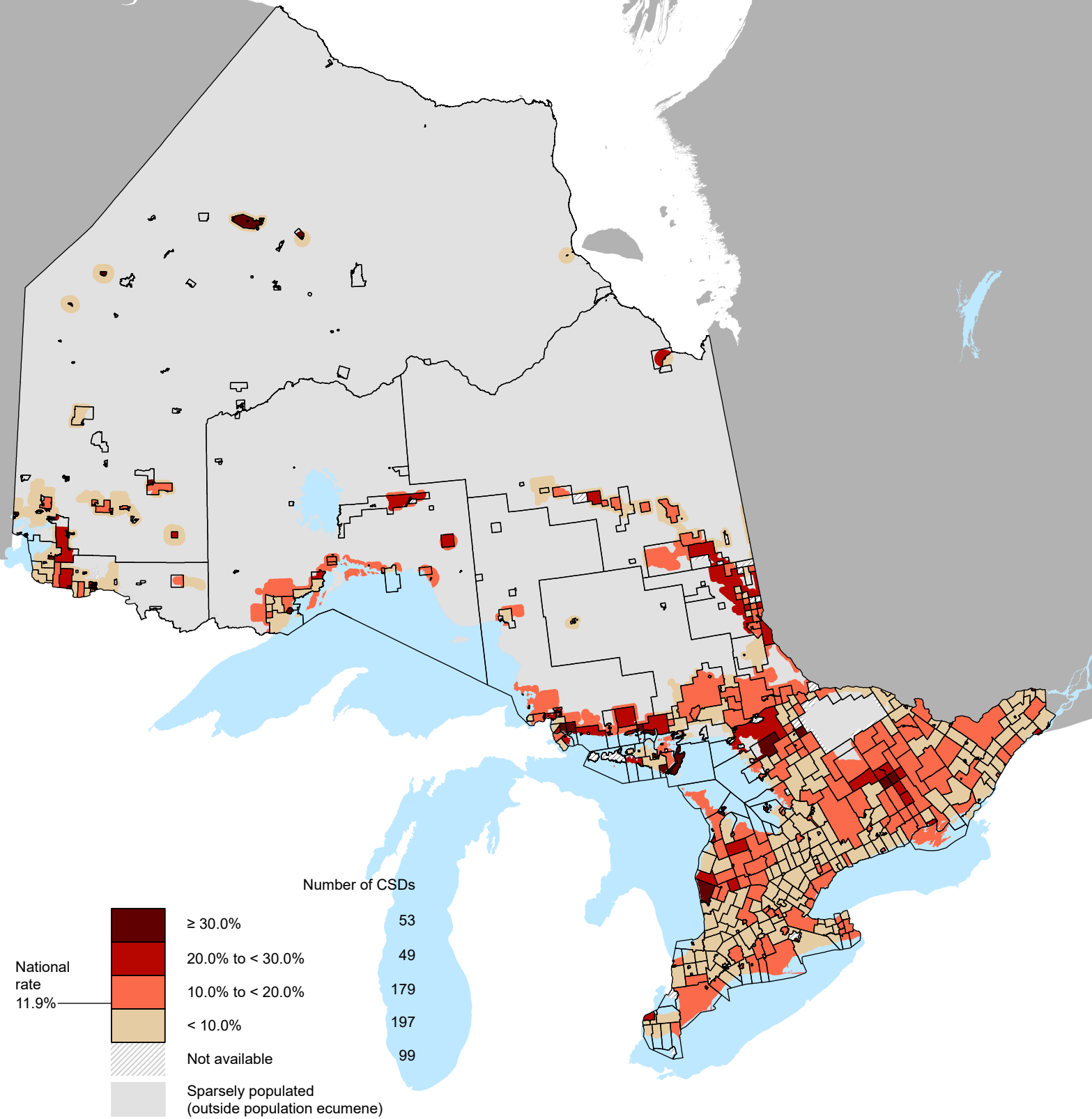


# Ontario Region

Percentage of children<sup>1</sup> below the after-tax low-income measure<sup>2</sup> in 2020, by 2021 census subdivision (CSD)



National rate  
11.9%

Number of CSDs

1. Children are defined here as the population in private households younger than 18 years of age.  
 2. For a one-person household, the after-tax low-income measure (LIM-AT) is \$26,503.  
 For larger households, this amount is adjusted upward by multiplying it by the square root of household size.

