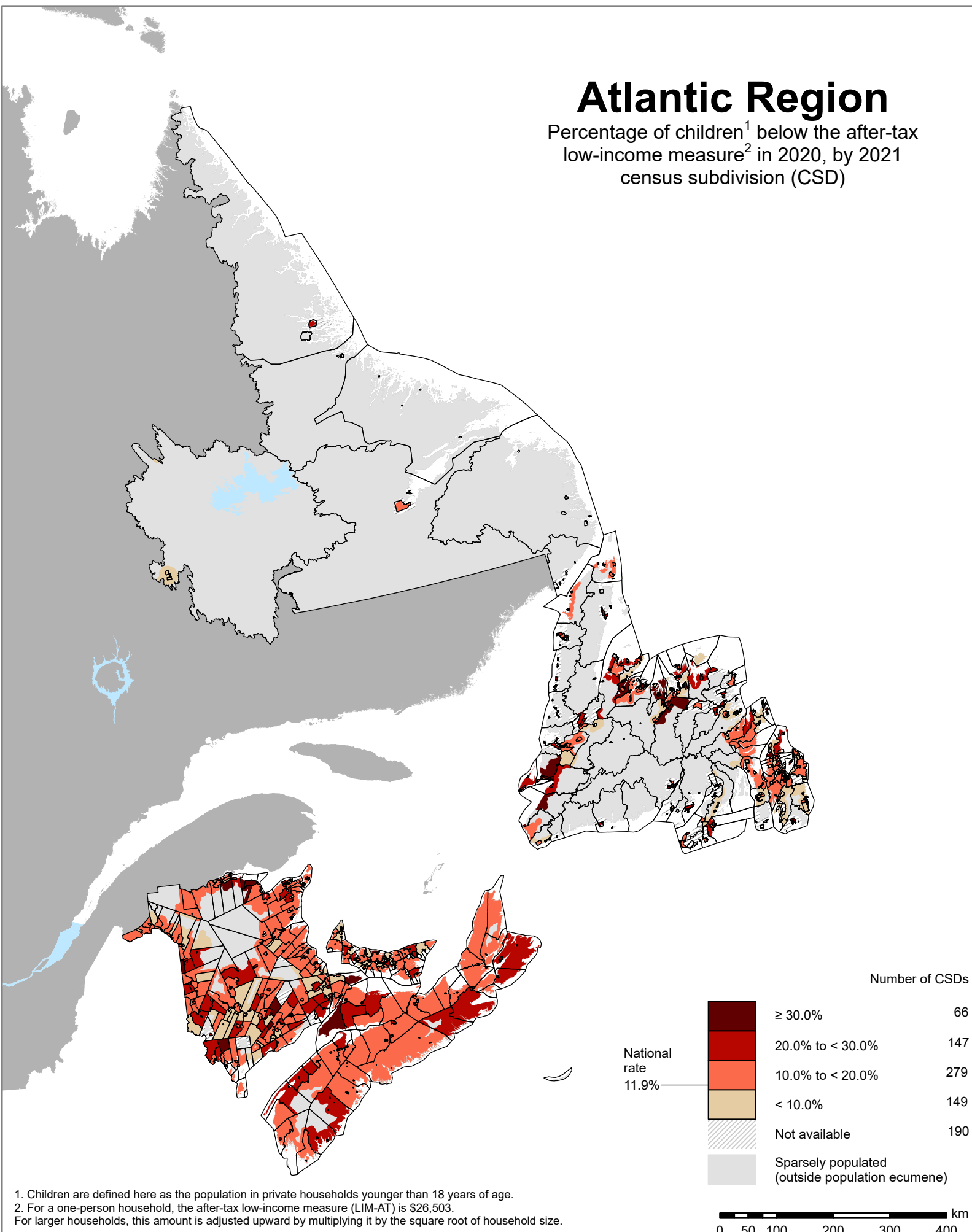


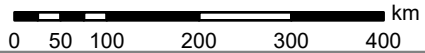
Atlantic Region

Percentage of children¹ below the after-tax low-income measure² in 2020, by 2021 census subdivision (CSD)



Color	Percentage Range	Number of CSDs
Dark Red	≥ 30.0%	66
Red	20.0% to < 30.0%	147
Orange	10.0% to < 20.0%	279
Yellow	< 10.0%	149
White	Not available	190
Grey	Sparsely populated (outside population ecumene)	

National rate
11.9%



1. Children are defined here as the population in private households younger than 18 years of age.
 2. For a one-person household, the after-tax low-income measure (LIM-AT) is \$26,503. For larger households, this amount is adjusted upward by multiplying it by the square root of household size.