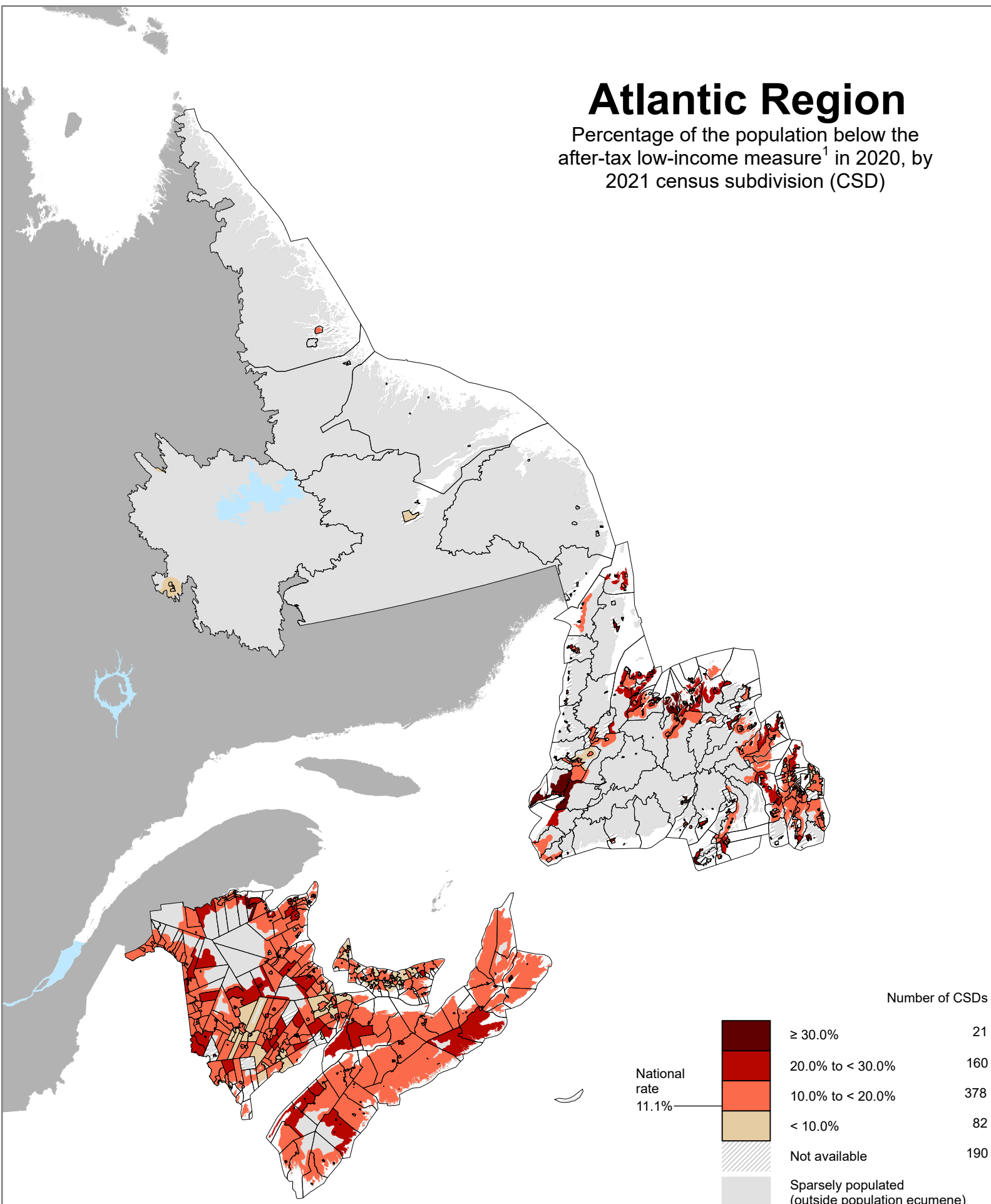


Atlantic Region

Percentage of the population below the after-tax low-income measure¹ in 2020, by 2021 census subdivision (CSD)



1. For a one-person household, the after-tax low-income measure (LIM-AT) is \$26,503. For larger households, this amount is adjusted upward by multiplying it by the square root of household size.

0 50 100 200 300 400 km