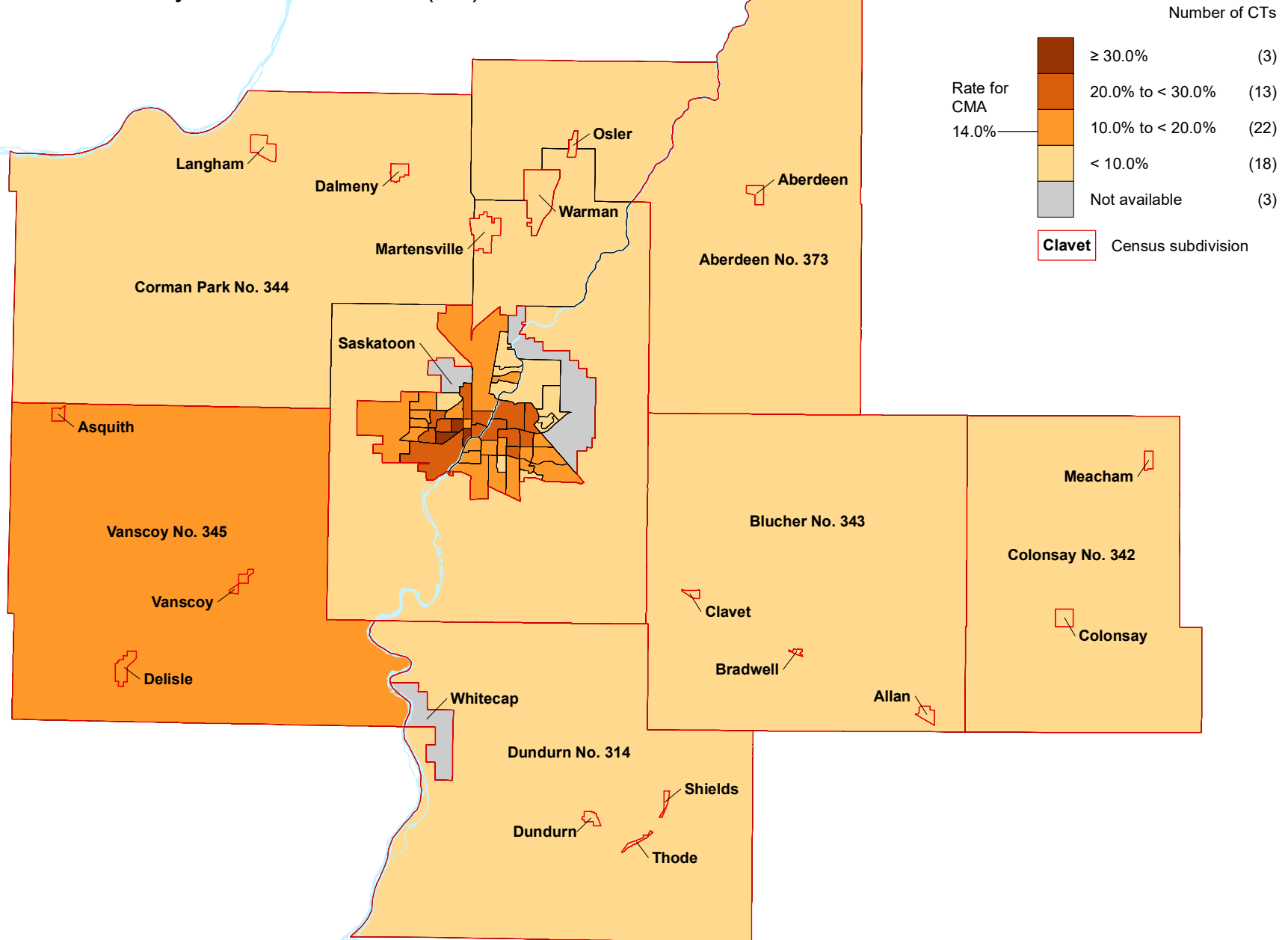


Saskatoon CMA

Percentage of the population in poverty¹ in 2015,
by 2016 census tract (CT)



1. Based on the 2018 base of the Market Basket Measure (MBM), Canada's official poverty line.
The MBM threshold for a four-person family in the CMA of Saskatoon was \$43,911 in 2015. The threshold level varies for families of other sizes.